

# Technical Information

AQUASTAR C 102 W



AQUAFIX BELGIUM BVBA  
Tel. 013 66 83 03, WWW.AQUAFIX.BE



AQUAFIX MILIEU B.V.  
Tel. 0297 26 29 29, WWW.AQUAFIX.NL

### Operating data

Flow	0 m <sup>3</sup> /h
Head	0 m
Shaft power P2	
Pump efficiency	s %
Required pump NPSH	
Pumpe type	Single head pump
No. of pumps	1
Fluid	Water, clean

### Pump

Pump Code	AQUASTAR C 102 W
Impeller	Vortex impeller 110
Impeller size	mm
Solid size	40 mm
Discharge port	DN80
Suction port	s

### Motor

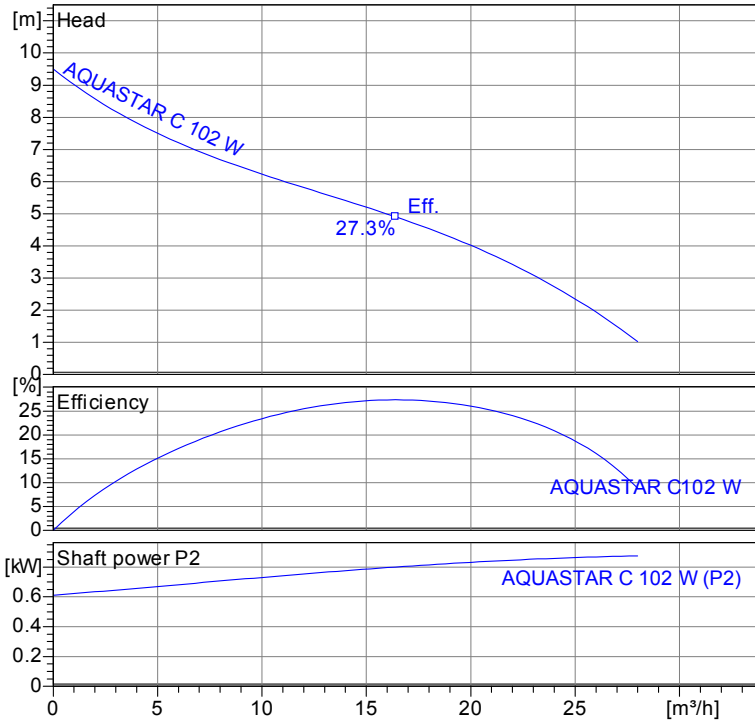
Rated voltage	230 V
Frequency	50 Hz
Rated power P2	0.8 kW
Rated speed	2900 rpm
Number of poles	2
Efficiency	73 %
Rated current	5.3 A
Degree of protection	IP 68

### Materials

Collecting tank	Polyethylene
Pressure cover of the pump	Plastic PP-GF
Impeller	Cast steel GS52
Motor housing cover	Plastic PP-GF
Motor housing	Stainless steel 1.4301
Motor shaft	Stainless steel 1.4104
Pressure cover Flap valve	cast iron EN-GJL-250
Swing check valve housing	Plastic PP-GF
Bolts	Stainless steel
Elastomeres	Nitrile Rubber
Lip seals	Nitrile Rubber

Lower Bearing	Deep Groove Ball Bearing
Upper Bearing	Deep Groove Ball Bearing

Testnorm: ISO9906 Sect. 4.4.2



Dry well installation  
Dimensions in mm,

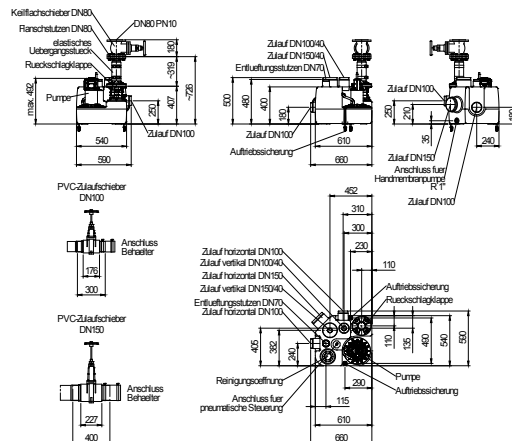


Table Dimensions (mm)

2.3.7 - 14/03/2012 (Build 345)

Project	Project no.:	Created by:	Page: 1
---------	--------------	-------------	------------

# Performance Curve

AQUASTAR C 102 W

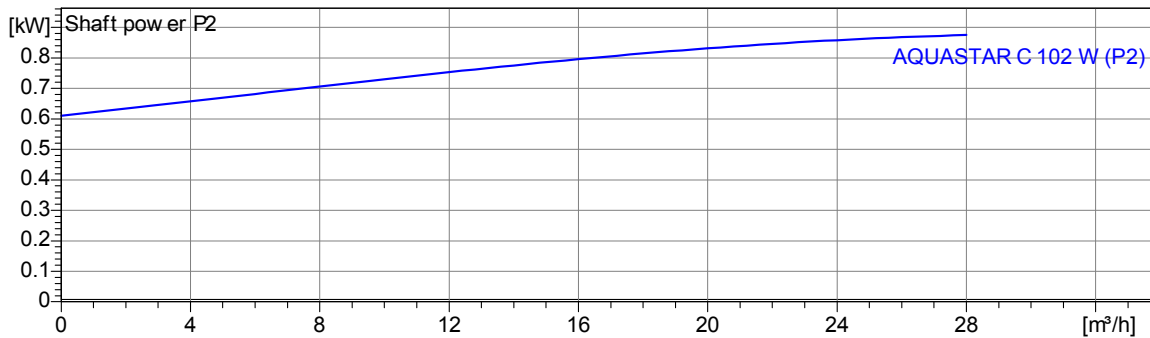
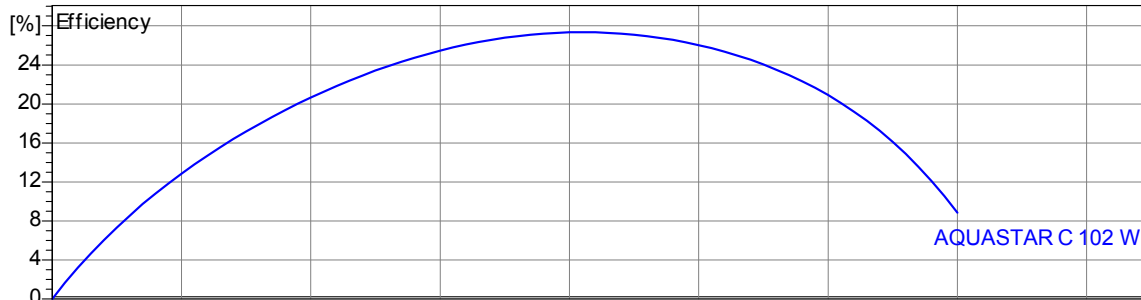


Impeller						
Impeller type: Vortex impeller	Solid size 40 mm	Ø:	Max. Ø: 110 mm	Min. Ø: 110 mm	Sel. Ø: 110 mm	

Operating data					
Speed: <b>2900 rpm</b>	Frequency: <b>50 Hz</b>	Duty point: <b>Q = 0 m³/h</b>	<b>H = 0 m</b>	Shaft power P2:	Discharge port: <b>DN80</b>

Power data referred to:  
Water, clean [100%] ; 20°C; 998.3kg/m³; 1.005mm²/s

Testnorm: ISO9906 Sect. 4.4.2



2.3.7 - 14/03/2012 (Build 345)

Project	Project no.:	Created by:	Page: 2
---------	--------------	-------------	------------

# Dimensions

AQUASTAR C 102 W

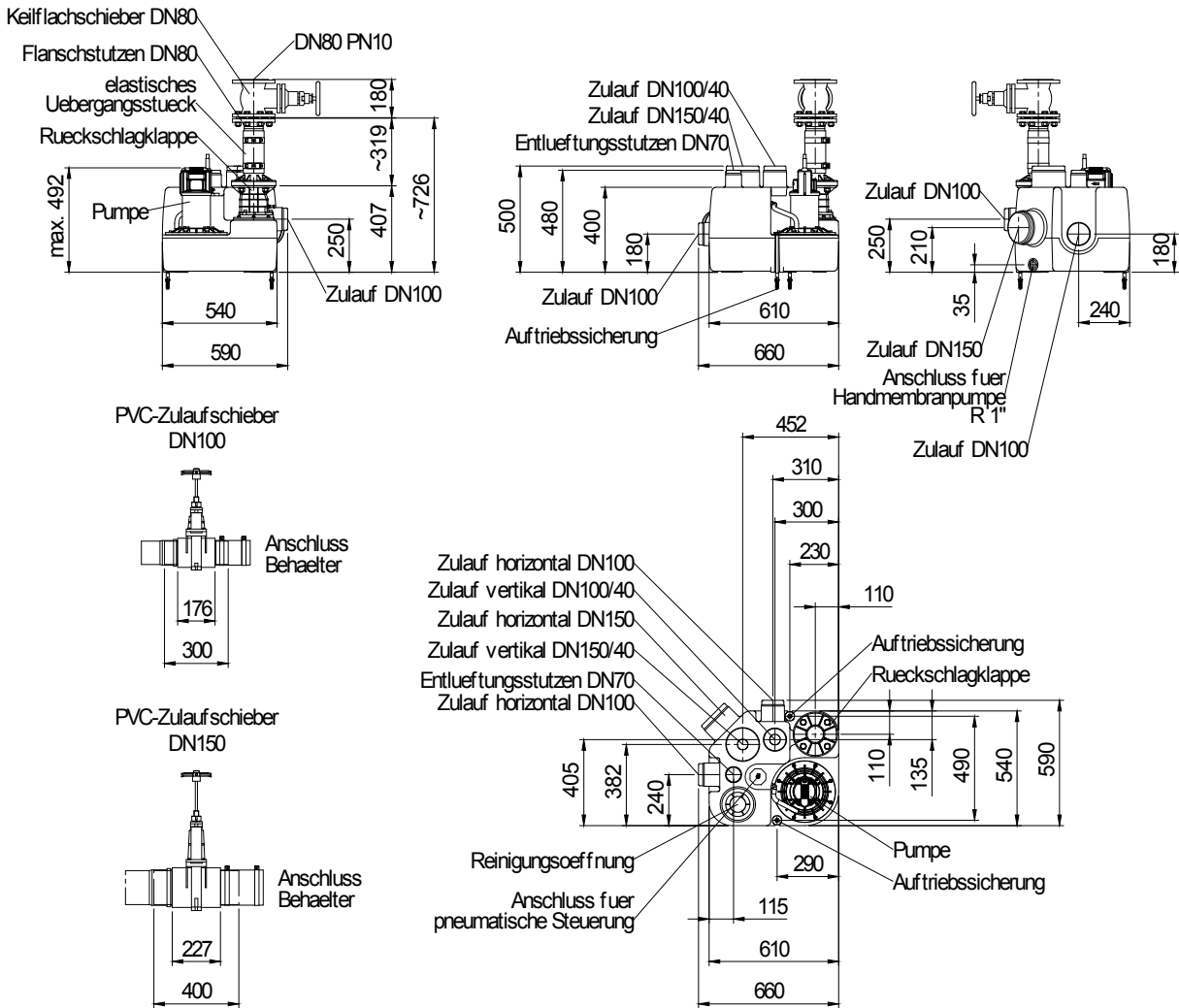


AQUAFIX BELGIUM BVBA  
Tel. 013 66 83 03, WWW.AQUAFIX.BE



AQUAFIX MILIEU B.V.  
Tel. 0297 26 29 29, WWW.AQUAFIX.NL

Dry well installation  
Dimensions in mm, le



## Table Dimensions ( mm )

--	--	--	--

# Technical Data

AQUASTAR C 102 W



AQUAFIX BELGIUM BVBA  
Tel. 013 66 83 03, WWW.AQUAFIX.BE



AQUAFIX MILIEU B.V.  
Tel. 0297 26 29 29, WWW.AQUAFIX.NL

Operating data					
Flow	0 m <sup>3</sup> /h	m <sup>3</sup> /h	Head	0	m
Shaft power P2		kW	Geodetic head	0	m
Pump efficiency	s	%	Required pump NPSH		m
Pumpe type	Single head pump		No. of pumps	1	
Fluid	Water, clean		Temperature	20 °C	
Density	998.3	kg/m <sup>3</sup>	Kin. viscosity	1.005	mm <sup>2</sup> /s

Pump					
Pump Code	AQUASTAR C 102 W		Speed	2900	rpm
Suction port			Head	Max.	9.5 m
Discharge port	DN80			Min.	1.0 m
Impeller type	Vortex impeller		Flow	Max.	28.0 m <sup>3</sup> /h
Solid size	40	mm	Pump efficiency max.	27.3 %	
Impeller Ø	110	mm	Required rated power max. P2	0.9	kW

Motor					
Motor version	Submersible motor		Insulation class	F	
Motor name	AM 120CM1,2/2 W		Degree of protection	IP 68	
Frequency	50	Hz	Temperature class		
Rated power P1	1.2	kW			
Rated power P2	0.8	kW	Explosion protection		
Rated speed	2900	rpm	Efficiency at % rated power	100%	73 %
Rated voltage	230	V 1~		75%	%
Rated current	5.3	A		50%	%
Starting current, direct starting	31.8	A	cos phi at % rated power	100%	0.99
Starting current, star-delta	1C	A		75%	
Starting mode	Directly			50%	
Power cable	5G1,5		Control cable		
Type of power cable	H07RN-F		Type of control cable		
Cable length	3 m		Service factor	1.15	
Shaft seal	Lip seals		Nitrile Rubber		
Bearing	Lower Bearing		Deep Groove Ball Bearing		
	Upper Bearing		Deep Groove Ball Bearing		
Remarks	Start-/ Runcapacitor: - µF / 25µF				

Materials / Weight			
Collecting tank	Polyethylene	Motor shaft	Stainless steel 1.4104
Impeller	Cast steel GS52	Swing check valve housing	Plastic PP-GF
Pressure cover of the pump	Plastic PP-GF	Pressure cover Flap valve	Grey cast iron EN-GJL-250
Motor housing cover	Plastic PP-GF	Bolts	Stainless steel
Motor housing	Stainless steel 1.4301	Elastomeres	Nitrile Rubber
Weight aggregat	32 kg		

Project	Project no.:	Created by:	Page: 4
---------	--------------	-------------	------------