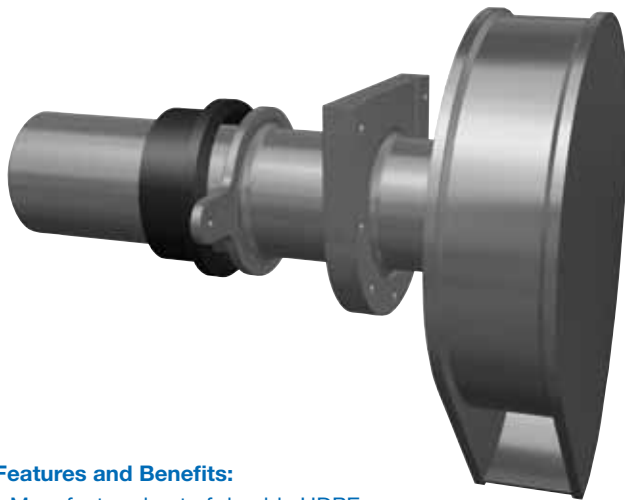


VORTEX FLOW CONTROL TYPE FLOWFIX



The Flowfix Vortex flow control is a device for controlling the rate storm water which leaves a storage facility and minimizes the potential flood risk. The Flowfix flow control can be used as part of a storm water management system. The Flowfix flow control creates an hydraulic effect, and air filled vortex which creates a back pressure limiting discharge to the required rate. The Flowfix Valve operates automatically with no moving parts and no external power source. An application of the Flowfix is to control the flow from storm water attenuation tanks preventing downstream flooding during heavy rainfall. The Flowfix flow control is self activating and self cleaning. The Flowfix can be removed easy for maintenance if required and can be operated via a wire rope from the inside of the manhole cover. The Flowfix valves are manufactured out of high quality durable HDPE 1st class in our own factory and will be manufactured always custom-made because every situation is different.

Features and Benefits:

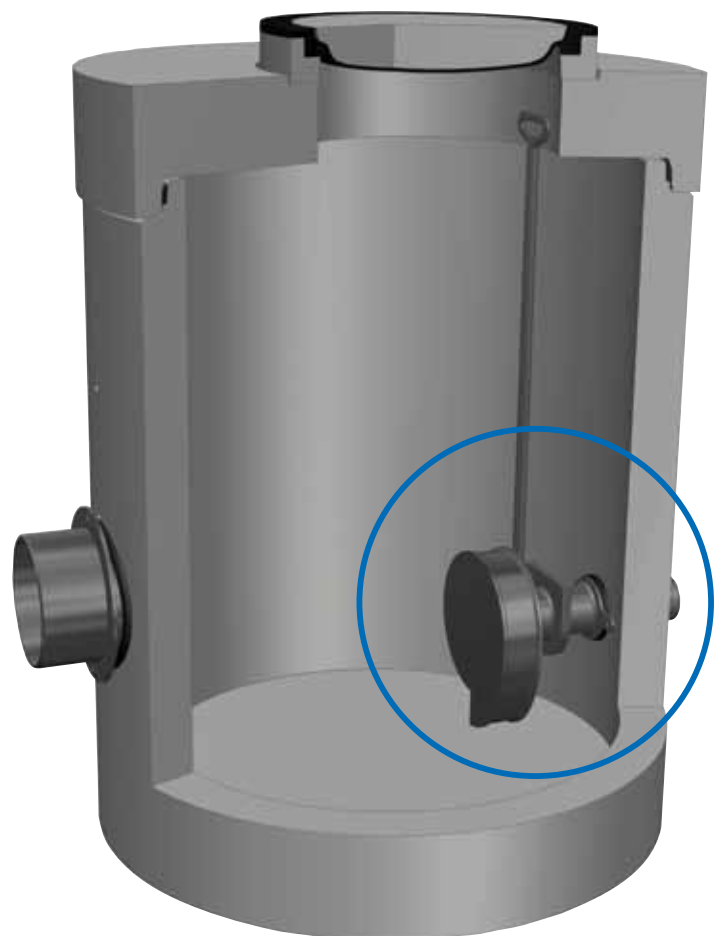
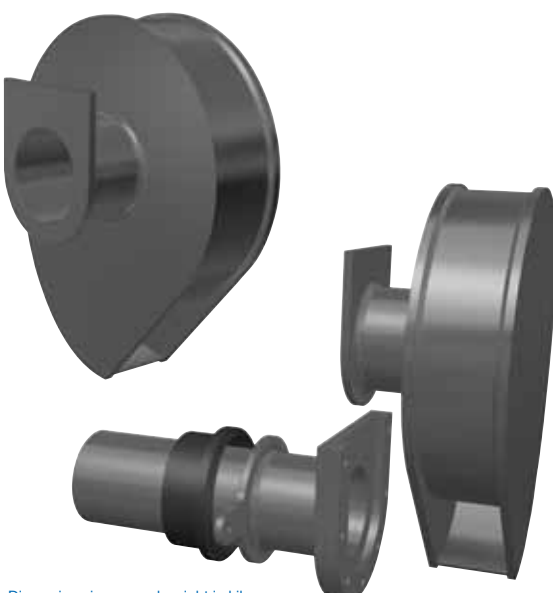
- Manufactured out of durable HDPE
- Easy operation installation
- No moving parts, no external power source
- Minimum maintenance
- Prefab customized from stock in concrete circular manholes with diameter of Ø 800, 1000, 1200, 1500, 2000, 2500 & 3000mm

Options:

- Overflow outlet chamber
- Customized production on request in any capacity

Certificate:

- Aquafix Quality Certificate



Dimensions in mm and weight in kilograms

Subject to changes

AQUAFIX MILIEU®

YOUR PARTNER FOR THE FUTURE



Mijdrecht

Laakdal

Netherlands:
AQUAFIX MILIEU BV
Genieweg 20
NL-3641 RH MIJDRECHT
T: +31 297 26 29 29
info@aquafix.nl

Belgium:
AQUAFIX BELGIUM BVBA
Dwarsstraat 6A
BE-2430 LAAKDAL
T: +32 13 66 83 03
info@aquafix.be

WWW.AQUAFIX.EU